

KEYNOTE LEGEND

① 3" FUELE AND 2" COMBUSTION AIR TO ROOF, TYPICAL FOR EACH BOILER.

GENERAL NOTES

1. ALL HEIGHTS TO ROOF TOPS SHALL BE 5'-4" UNLESS OTHERWISE NOTED.

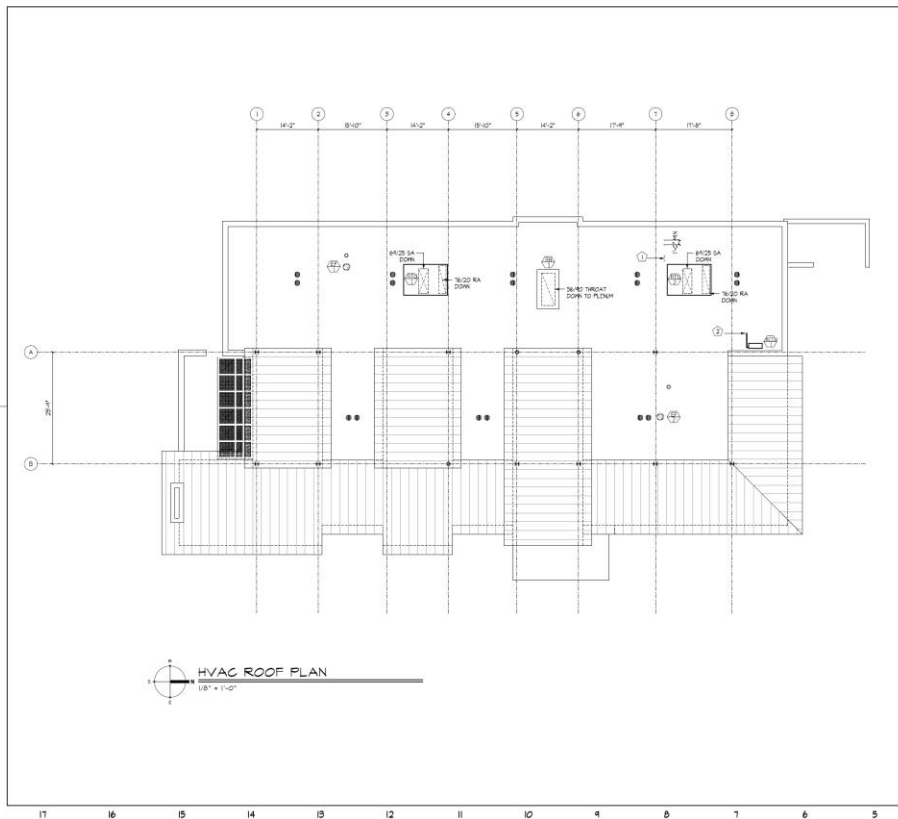
PSA
Professional Seal Area

**SCHAUMBURG TOWNSHIP DISTRICT LIBRARY
HANOVER PARK BRANCH
HANOVER PARK, ILLINOIS**

Sheet Title:
HEATING
FLOOR PLAN

Proj. No.	040285
Date	8-3-09
Drawn	DAG
Checked	ECB
Approved	CSB

M11



KEYNOTE LEGEND

① 3" FUELE AND 2" COMBUSTION AIR, TYPICAL FOR EACH BOILER. TYPICAL FOR EACH BOILER. AIR TO ROOF ROOF TOPS SHALL BE 5'-4" UNLESS OTHERWISE NOTED.

② 3" FUELE AND 2" COMBUSTION AIR TO ROOF, TYPICAL FOR EACH BOILER. TYPICAL FOR EACH BOILER. AIR TO ROOF ROOF TOPS SHALL BE 5'-4" UNLESS OTHERWISE NOTED.

GENERAL NOTES

PSA
Professional Seal Area

**SCHAUMBURG TOWNSHIP DISTRICT LIBRARY
HANOVER PARK BRANCH
HANOVER PARK, ILLINOIS**

Sheet Title:
HVAC
ROOF PLAN

Proj. No.	040285
Date	8-3-09
Drawn	DAG
Checked	ECB
Approved	CSB

M120

FAN SCHEDULE

MARK	MANUFACTURER & MODEL NO.	MAX CFM	MIN CFM	DIA. S.P. IN. OF W.C.	FAN DATA							REMARKS
					TYPE	DIA.	RPM	BHP	HP	VOLT	PHASE	
EF-1	ROCKWELL	577	6.6	81	9	175	8.8W	9.8	Y5	1	PROVIDE WITH PRE-WIRED DISCONNECT SWITCH, BACKDRAFT DAMPER, ROOF CURB, HINGED BASE KIT, ALUMINUM BRIDGESCREEN AND 6-AMP, 60-VOLT FAN SPEED CONTROLLER	
EF-2	COOK MODEL	225	0.6	81	80	1590	10.5W	9.6	Y5	1	PROVIDE WITH PRE-WIRED DISCONNECT SWITCH, BACKDRAFT DAMPER, ROOF CURB, HINGED BASE KIT, AND ALUMINUM BRIDGESCREEN	

ROOF HOOD SCHEDULE

MARK	MANUFACTURER & MODEL NO.	TYPE	CFM	PRESS. DROP	HOOD SIZE	THROAT SIZE	CURB CAP	REMARKS
REH1	COOK	RECIP	8255	0.25	81" x 81"	18" x 18"	413" x 363"	PROVIDE ROOF CURB AND COUNTER BALANCED BACKDRAFT DAMPER

ROOFTOP UNIT SCHEDULE - AIR SECTION

MARK	MANUFACTURER & MODEL NO.	CFM	MIN CFM	OA CFM	UNIT ELECTRICAL DATA				SUPPLY FAN DATA				FILTER		FACTORY MOUNTED DISCONNECT	ONE POINT CONNECTION	SERVICE OUTLET	REMARKS
					VOLT	PHASE	WATTS	COEF. OF	TYPE	E.S.P.	RPM	BHP	HP	TYPE				
RTU1	TRANE MODEL YTHW50A	6775	9600	105	208	3	80/10/0	FC	2	921	4.8	5	THROW	30%	YES	YES	YES	PROVIDE WITH VFD & ROOF CURB
RTU2	TRANE MODEL YTHW50A	6775	9600	105	208	3	80/10/0	FC	2	921	4.8	5	THROW	30%	YES	YES	YES	PROVIDE WITH VFD & ROOF CURB

ROOFTOP UNIT SCHEDULE - CONDENSER/ EVAPORATOR SECTION

MARK	FACE VELOCITY	ROWS	FFP	SE	EVAPORATOR DATA				COMPRESSOR			CONDENSER DATA		REMARKS
					EA1 (DB)	EA1 (WB)	LAT (DB)	LAT (WB)	MEH TOTAL	MEH SERVS	NO.	TONS (TOT)	FAN NO. / HP	
RTU-2B	100	3	SS	70	55	55.0	55.0	993	993	2	6	21.0/0.83		

ROOFTOP UNIT SCHEDULE - HEATER SECTION GAS

MARK	OUTPUT MBH	NPUT MBH	STAGES	BURNER TYPE	GAS PRESSURE @INBT	REMARKS
RTU-2B	233	233	2	NR3087	7.0" W.C.	

VAV BOX SCHEDULE

MARK	MANUFACTURER & MODEL NO.	INLET DIA.	MAX CFM	MIN CFM	MAX UNIT STATIC PRESS. DROP (P.W.C.)	STATIC PRESS. @ INLET (W.C.)	REQD. ROOM NO.	CONTROLS	HOT WATER COIL DATA										FACTORY MOUNTED DISCONNECT	CONTROL TRANSFORMER	PRIMARY VOLTAGE	REMARKS
									MEH	CFM	EAT	LAT	EMT	WMT	CFM	PO. FT. OF ROOF	ROWS	VALVE CV				
VAV-133	TRANE VAVP	10"	500	100	0.8	0.75	30	000	8.8	500	55	60	60	80.3	8.47	376	2	1.63	YES	YES	YES	
VAV-132	TRANE VAVP	10"	255	75	0.65	0.75	30	000	8.9	16	55	116	80	81.7	0.76	333	1	1.02	YES	YES	YES	
VAV-134	TRANE VAVP	10"	90	45	0.39	0.75	30	000	8.9	450	55	87	80	81.0	1.08	392	1	2.44	YES	YES	YES	
VAV-135	TRANE VAVP	10"	440	176	0.84	0.75	30	000	9.6	470	55	103.5	80	80.9	0.86	2	2.43	YES	YES	YES		
VAV-136	TRANE VAVP	10"	176	352	0.26	0.75	30	000	9.4	305	55	80	80	80.7	0.34	232	1	0.9	YES	YES	YES	
VAV-233	TRANE VAVP	8"	300	300	0.97	0.75	30	000	10.6	300	55	102.2	80	80.8	0.76	2	2.74	YES	YES	YES		
VAV-232	TRANE VAVP	8"	600	600	0.33	0.75	30	000	10.2	530	55	92	80	80.9	1.06	429	1	3.85	YES	YES	YES	
VAV-231	TRANE VAVP	8"	900	450	0.39	0.75	30	000	9.9	450	55	88	80	80.7	1.08	3	2.74	YES	YES	YES		
VAV-234	TRANE VAVP	8"	450	450	0.32	0.75	30	000	9.5	400	55	86	80	80.3	1.05	338	1	1	YES	YES	YES	
VAV-235	TRANE VAVP	8"	600	200	0.39	0.75	30	000	9.5	200	55	80.6	80	80.1	1.08	337	1	3.30	YES	YES	YES	
VAV-236	TRANE VAVP	8"	600	250	0.4	0.75	30	000	9.3	235	55	80.9	80	80.8	1.07	374	1	3.1	YES	YES	YES	
VAV-237	TRANE VAVP	8"	600	425	0.4	0.75	30	000	9.6	425	55	84.2	80	80.2	0.88	2.07	1	3.81	YES	YES	YES	
VAV-238	TRANE VAVP	8"	375	345	0.24	0.75	30	000	9.5	345	55	88.8	80	81.0	0.64	1.0	1	3.82	YES	YES	YES	

AIR INLETS AND OUTLETS

MARK	MANUFACTURER & MODEL NO.	FUNCTION	FACE SIZE	NECK SIZE	FACE STYLE	MATERIAL	FRAME TYPE	DAMPER	MAX. PRESS. DROP	REMARKS
A	TITUS 18-24	SUPPLY	24" X 24"	8" X 8"	2-SLOOT	ALUMINUM	LAY-18	---	0.1	SEE PLANS FOR SLOOT PITCH. PROVIDE WITH FIRE STOP PLUMB SECTION.
B	TITUS 18-24	SUPPLY	24" X 24"	8" X 8"	2-SLOOT	ALUMINUM	LAY-18	---	0.1	SEE PLANS FOR SLOOT PITCH. PROVIDE WITH FIRE STOP PLUMB SECTION.
C	TITUS 18-24	SUPPLY	24" X 24"	8" X 8"	4-76	LOADING	STEEL	LAY-18	---	SEE PLANS FOR SLOOT PITCH. PROVIDE WITH FIRE STOP PLUMB SECTION.
D	TITUS 18-24	SUPPLY	24" X 24"	8" X 8"	4-76	LOADING	STEEL	LAY-18	---	SEE PLANS FOR SLOOT PITCH. PROVIDE WITH FIRE STOP PLUMB SECTION.
E	TITUS 18-24	SUPPLY	24" X 24"	8" X 8"	4-76	LOADING	STEEL	LAY-18	---	SEE PLANS FOR SLOOT PITCH. PROVIDE WITH FIRE STOP PLUMB SECTION.
F	TITUS 18-24	SUPPLY	24" X 24"	8" X 8"	4-76	LOADING	STEEL	LAY-18	---	SEE PLANS FOR SLOOT PITCH. PROVIDE WITH FIRE STOP PLUMB SECTION.
G	TITUS 18-24	SUPPLY	24" X 24"	8" X 8"	4-76	LOADING	STEEL	LAY-18	---	SEE PLANS FOR SLOOT PITCH. PROVIDE WITH FIRE STOP PLUMB SECTION.
H	TITUS 18-24	SUPPLY	24" X 24"	8" X 8"	4-76	LOADING	STEEL	LAY-18	---	SEE PLANS FOR SLOOT PITCH. PROVIDE WITH FIRE STOP PLUMB SECTION.
I	TITUS 18-24	SUPPLY	24" X 24"	8" X 8"	4-76	LOADING	STEEL	LAY-18	---	SEE PLANS FOR SLOOT PITCH. PROVIDE WITH FIRE STOP PLUMB SECTION.
J	TITUS 18-24	SUPPLY	24" X 24"	8" X 8"	4-76	LOADING	STEEL	LAY-18	---	SEE PLANS FOR SLOOT PITCH. PROVIDE WITH FIRE STOP PLUMB SECTION.
K	TITUS 18-24	SUPPLY	24" X 24"	8" X 8"	4-76	LOADING	STEEL	LAY-18	---	SEE PLANS FOR SLOOT PITCH. PROVIDE WITH FIRE STOP PLUMB SECTION.
L	TITUS 18-24	SUPPLY	24" X 24"	8" X 8"	4-76	LOADING	STEEL	LAY-18	---	SEE PLANS FOR SLOOT PITCH. PROVIDE WITH FIRE STOP PLUMB SECTION.
1	TITUS 18-24	RETURN	24" X 24"	8" X 8"	PREFABRICATED	STEEL	LAY-18	---	0.28	
2	TITUS 18-24	RETURN	24" X 24"	8" X 8"	PREFABRICATED	STEEL	LAY-18	---	0.28	
3	TITUS 18-24	RETURN	24" X 24"	8" X 8"	PREFABRICATED	STEEL	LAY-18	---	0.28	
4	TITUS 18-24	RETURN	24" X 24"	8" X 8"	PREFABRICATED	STEEL	LAY-18	---	0.28	
5	TITUS 18-24	RETURN	24" X 24"	8" X 8"	PREFABRICATED	STEEL	LAY-18	---	0.28	
6	TITUS 18-24	RETURN	24" X 24"	8" X 8"	PREFABRICATED	STEEL	LAY-18	---	0.28	
7	TITUS 18-24	RETURN	24" X 24"	8" X 8"	PREFABRICATED	STEEL	LAY-18	---	0.28	
8	TITUS 18-24	RETURN	24" X 24"	8" X 8"	PREFABRICATED	STEEL	LAY-18	---	0.28	
9	TITUS 18-24	RETURN	24" X 24"	8" X 8"	PREFABRICATED	STEEL	LAY-18	---	0.28	
10	TITUS 18-24	RETURN	24" X 24"	8" X 8"	PREFABRICATED	STEEL	LAY-18	---	0.28	

IT 16 15 14 13 12 11 10 9 8 7 6 5 4 3 2 1

2025
SCHEDULE
MAY 2025
REVISED
10/2025

NO. DATE

NO. DATE

NO. DATE

NO. DATE

NO. DATE

NO. DATE

NO. DATE

NO. DATE

NO. DATE

NO. DATE

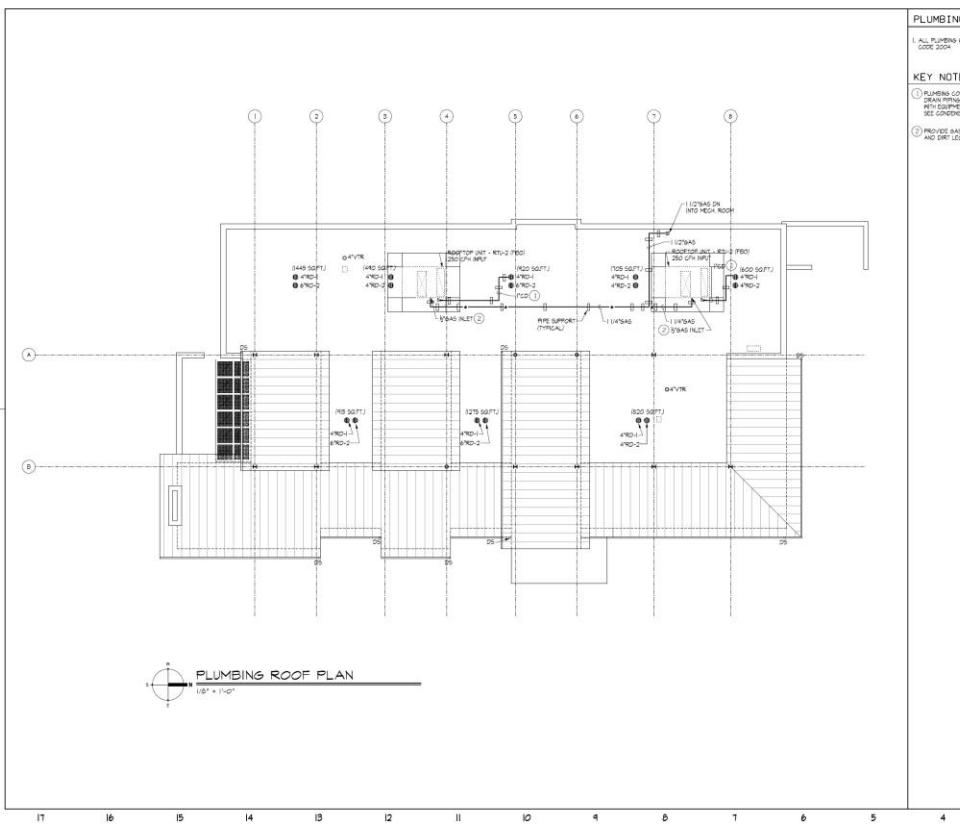
SCHAMBERS TOWNSHIP DISTRICT LIBRARY
HANOVER PARK BRANCH
HANOVER PARK, ILLINOIS

PSA
PROJECT ENGINEERS ASSOCIATES

Proj. No. 240255
Date: 8-3-25
Draw: SWS
Checked: SWS
Approved: LIS

Sheet Title:
VENTILATION
SCHEDULES

M410



PLUMBING NOTES

- ALL PLUMBING WORK SHALL COMPLY WITH THE ILLINOIS PLUMBING CODE 2024.

KEY NOTES

- PLUMBING CONTRACTOR TO PROVIDE AND INSTALL CONDENSATE DRAIN PIPING TO TERMINATE AT NEAREST ROOF DRAIN. COORDINATE WITH EQUIPMENT MANUFACTURER AND SEE CONDENSATE TRAP DETAIL ON SHEET P100.
- PROVIDE GAS SHUT-OFF VALVE, PRESSURE REGULATOR AND SHUT-OFF AT DECK/ROOF CONNECTION TO ROOF UNTIL.

2025
SCHEDULE
MAY 2025
REVISED
10/2025

NO. DATE

NO. DATE

NO. DATE

NO. DATE

NO. DATE

NO. DATE

NO. DATE

NO. DATE

NO. DATE

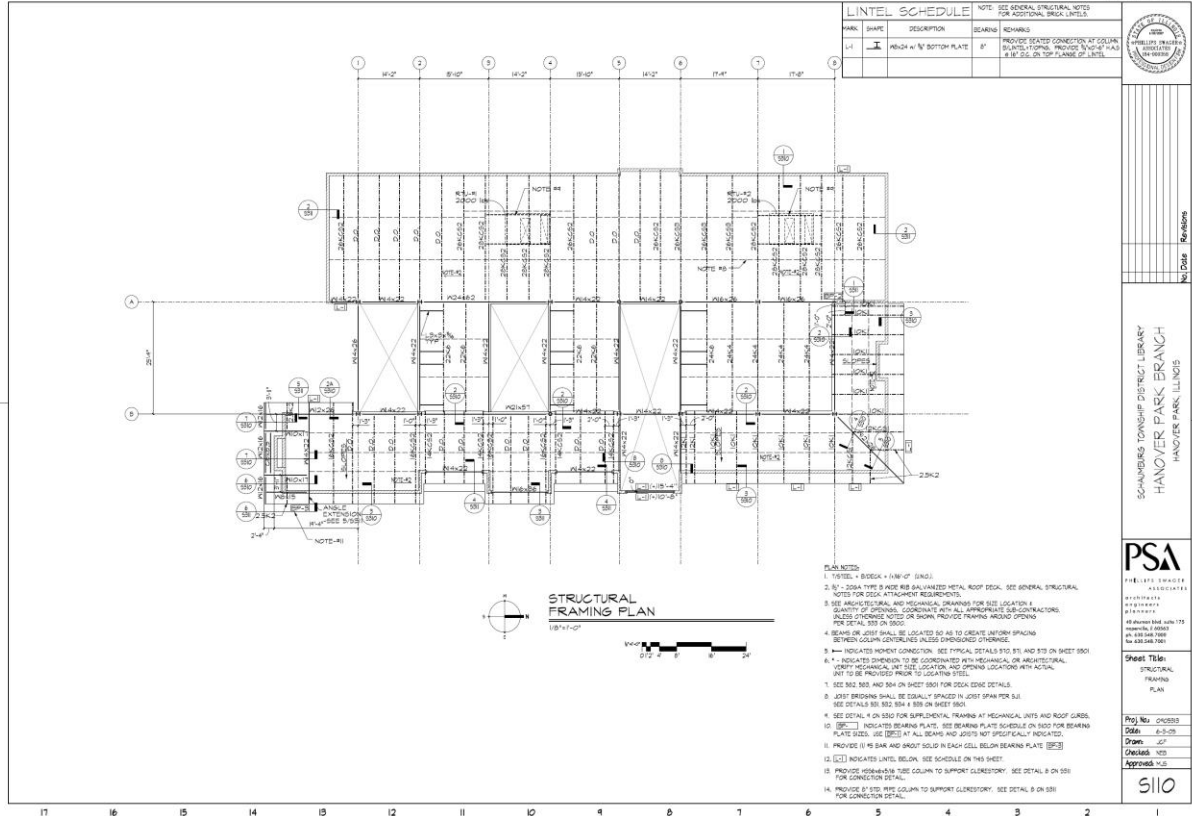
SCHAMBERS TOWNSHIP DISTRICT LIBRARY
HANOVER PARK BRANCH
HANOVER PARK, ILLINOIS

PSA
PROJECT ENGINEERS ASSOCIATES

Proj. No. 240255
Date: 8-3-25
Draw: CPM
Checked: TT
Approved: LIS

Sheet Title:
PLUMBING
ROOF PLAN

P120



LINTEL SCHEDULE				
MARK	SHAPE	DESCRIPTION	BEARING	REMARKS
L1	I	W8x10	W8x10	PROVIDE BEARING CONNECTION AT COLUMN
				AND MECHANICAL CONNECTION TO COLUMN
				1/2" MIN. ON TOP FLANGE OF LINTEL

NOTE: SEE GENERAL STRUCTURAL NOTES FOR ADDITIONAL BRIDGE DETAILS

PHILLIPS BRIDGE
 100' SPAN
 20' DEPTH

STRUCTURAL FRAMING PLAN
 1/8" = 1'-0"

- PLAN NOTES:**
1. REFER TO BRIDGE PLAN (SHEET 100) FOR DIMENSIONS.
 2. BEAMS SHALL BE A166 GALVANIZED METAL ROOF DECK. SEE GENERAL STRUCTURAL NOTES FOR DECK ATTACHMENT REQUIREMENTS.
 3. SEE ARCHITECTURAL AND MECHANICAL DRAWINGS FOR SIZE, LOCATION & QUANTITY OF OPENINGS. COORDINATE WITH ALL APPROPRIATE SUBCONTRACTORS. UNLESS OTHERWISE NOTED OR SHOWN, PROVIDE FRAMING AROUND OPENINGS PER DETAIL S81 ON SHEET 100.
 4. BEAMS OR JOIST SHALL BE LOCATED SO AS TO CREATE UNIFORM SPACING BETWEEN COLUMN CENTERS. UNLESS OTHERWISE SHOWN.
 5. # indicates MOMENT CONNECTION. SEE TYPICAL DETAILS S70, S71, AND S72 ON SHEET 100.
 6. # indicates DIMENSION TO BE COORDINATED WITH MECHANICAL OR ARCHITECTURAL. VERIFY MECHANICAL, INT. SIZE, LOCATION, AND OPENING LOCATIONS WITH ACTUAL. S81 TO BE PROVIDED PRIOR TO COLUMN STEEL.
 7. SEE S82, S83, AND S84 ON SHEET 100 FOR DECK EDGE DETAILS.
 8. JOIST BRIDGING SHALL BE EQUALLY SPACED IN JOIST SPAN PER S31. SEE DETAILS S81, S82, S83 & S84 ON SHEET 100.
 9. SEE DETAIL # ON S80 FOR SUPPLEMENTAL FRAMING AT MECHANICAL UNITS AND ROOF GARD.
 10. (B) indicates BEARING PLATE. SEE BEARING PLATE SCHEDULE ON S80 FOR BEARING PLATE DETAIL. USE (B) AT ALL BEAMS AND JOISTS NOT SPECIFICALLY INDICATED.
 11. PROVIDE (I) #8 BAR AND GROUT SOLID IN EACH CELL BELOW BEARING PLATE (B) #3.
 12. (C) indicates LINTEL BELOW. SEE SCHEDULE ON THIS SHEET.
 13. PROVIDE MECHANICAL CONNECTION TO SUPPORT GLENSHORY. SEE DETAIL B ON S81 FOR CONNECTION DETAIL.
 14. PROVIDE 2 #800 TIE COLUMN TO SUPPORT GLENSHORY. SEE DETAIL B ON S81 FOR CONNECTION DETAIL.

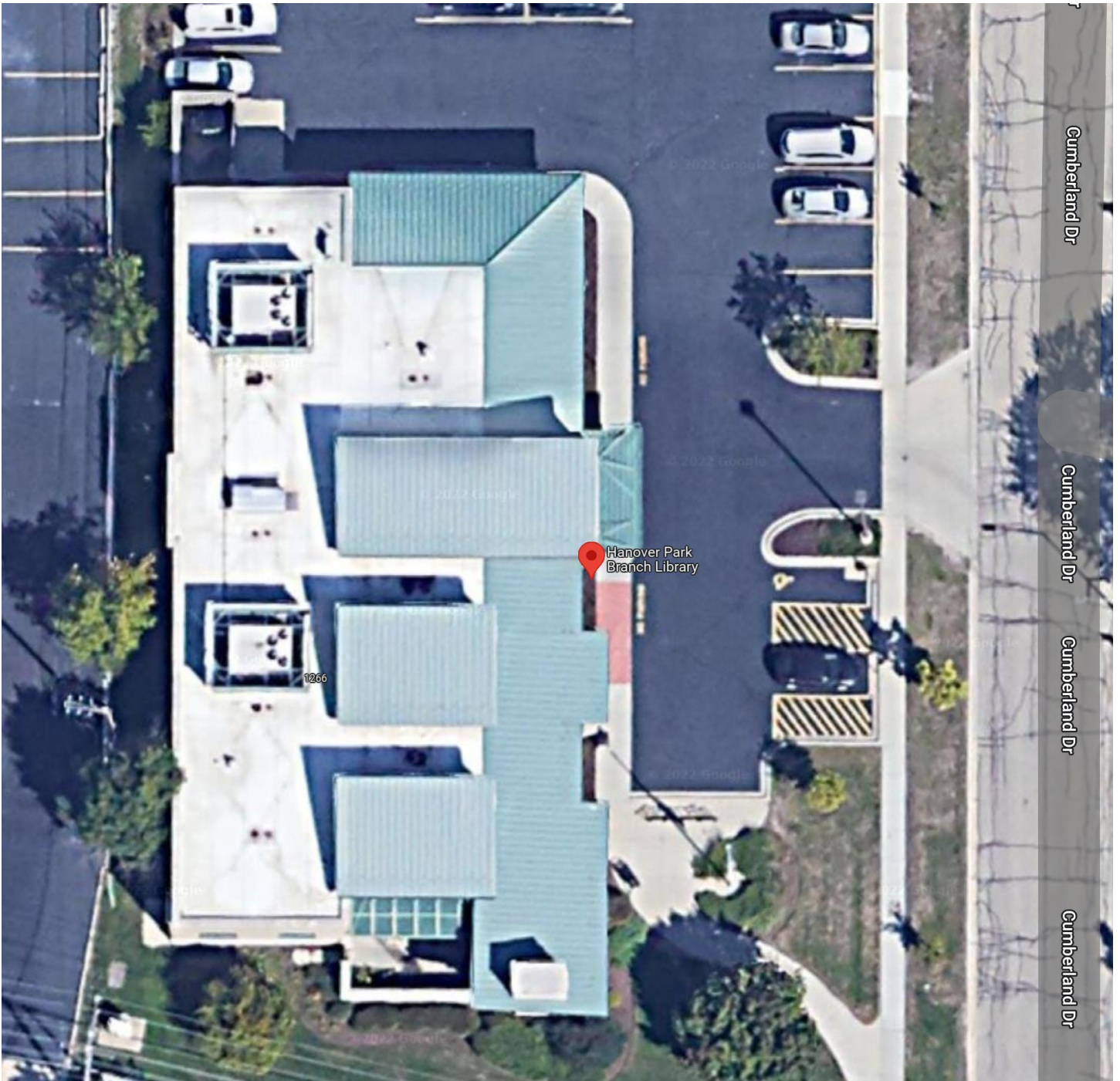
SCHMIDT TOWNSHIP DISTRICT LIBRARY
 HANOVER PARK BRANCH
 HANOVER PARK, ILLINOIS

PSA
 PROFESSIONAL SERVICE ASSOCIATION
 48 ANTHONY DRIVE, SUITE 110
 CHICAGO, ILLINOIS 60604-2088
 TEL: 312.467.8800
 FAX: 312.467.8801

Sheet Title:
 STRUCTURAL FRAMING PLAN

Proj No.: 0105933
 Date: 6-3-09
 Drawn: JCF
 Checked: JCF
 Approved: HLB

510



Cumberland Dr

Cumberland Dr

Cumberland Dr

Cumberland Dr







